

LINA^{top}

easy, versatil top by DaR

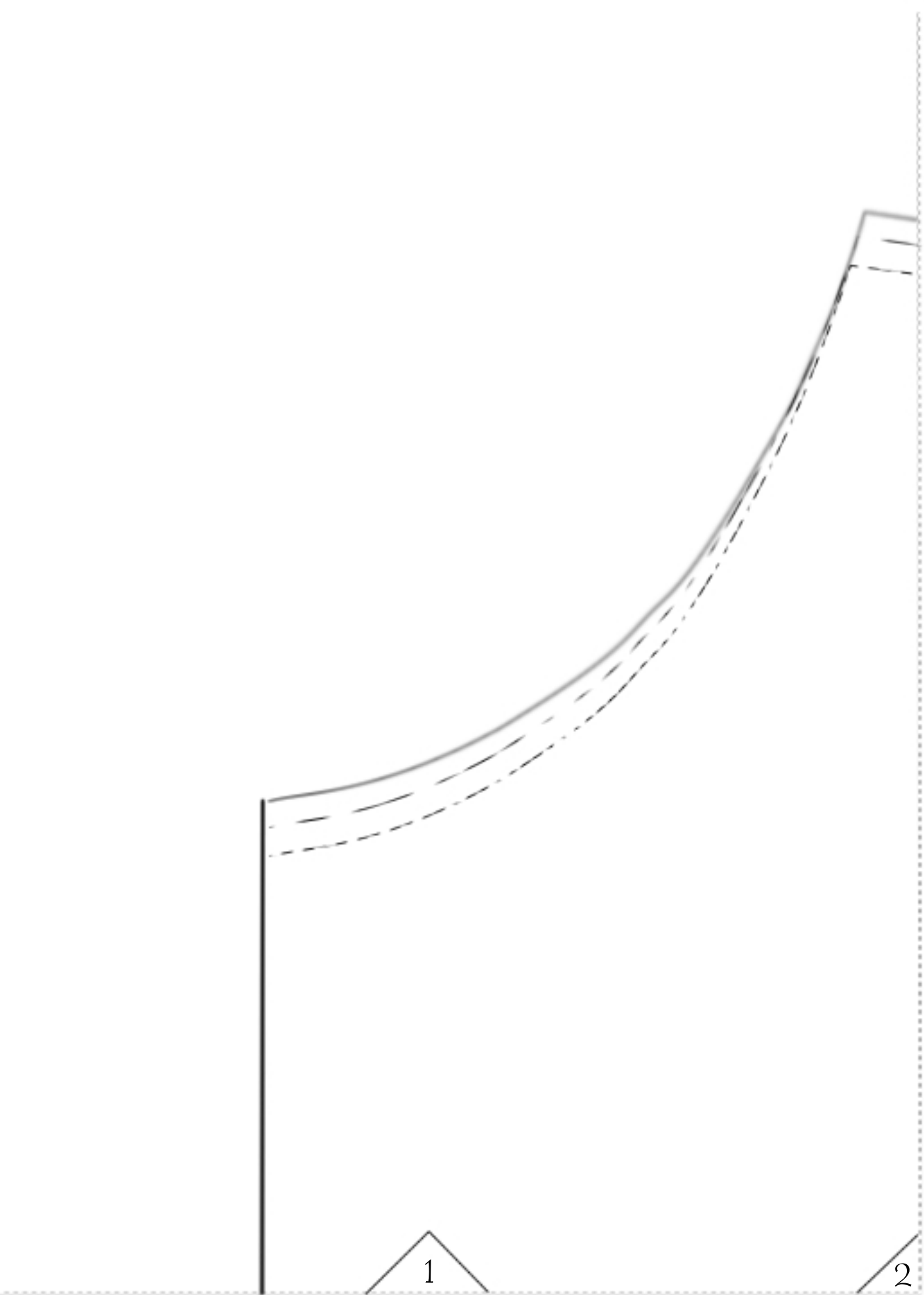


Lina Top

es una pieza sencilla realizada con jersey y diselada para esas chicas que quieren disfrutar del escote en la espalda sin comprometer el uso de un sosten

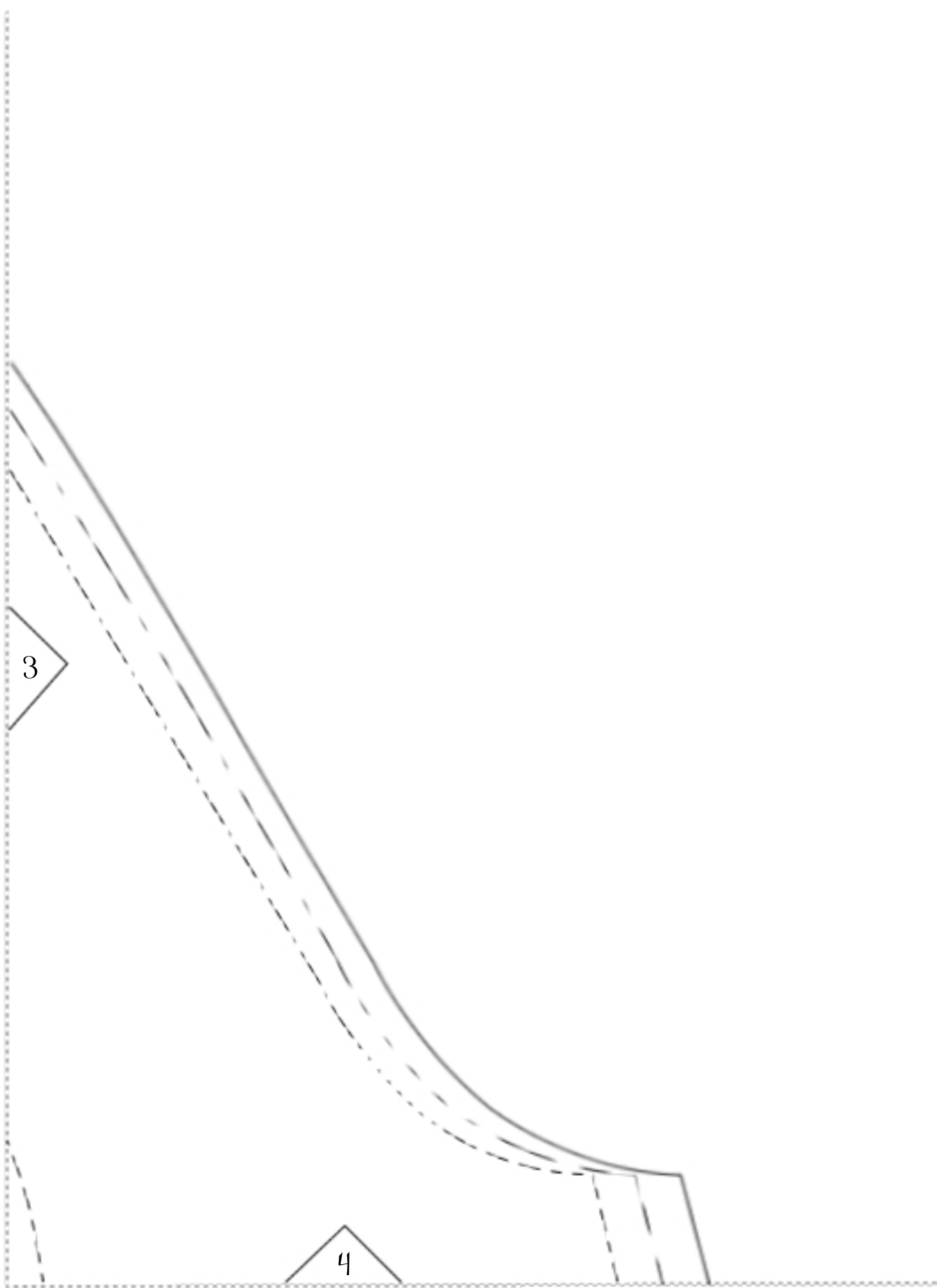
Tabla de Medidas

	Small	Medium	Large
Busto	84 – 89 cm	90 – 95 cm	96 – 99 cm
Cintura	64 – 70 cm	70 – 76 cm	76 – 80 cm



2

3



LINA top

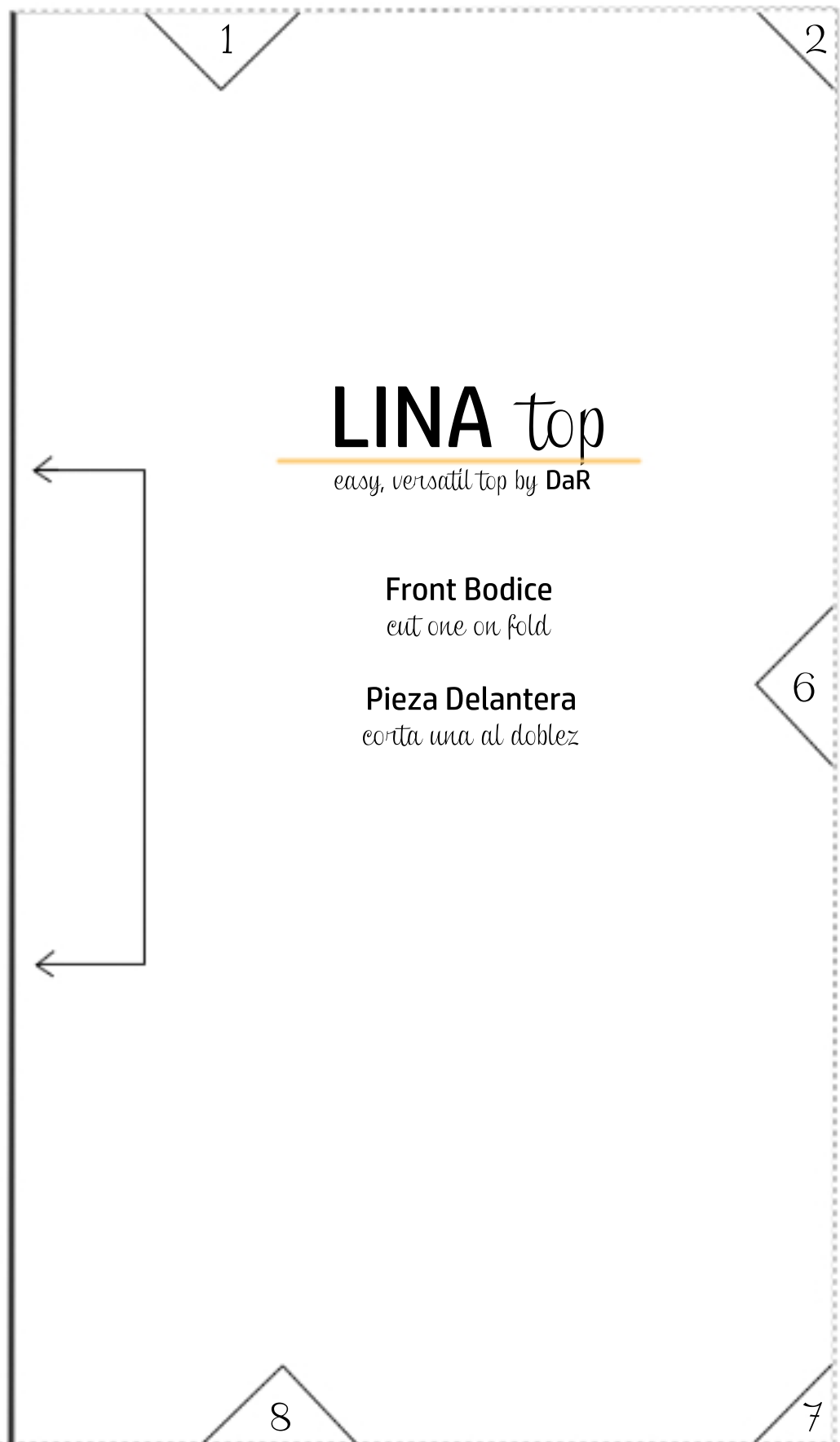
easy, versatil top by DaR

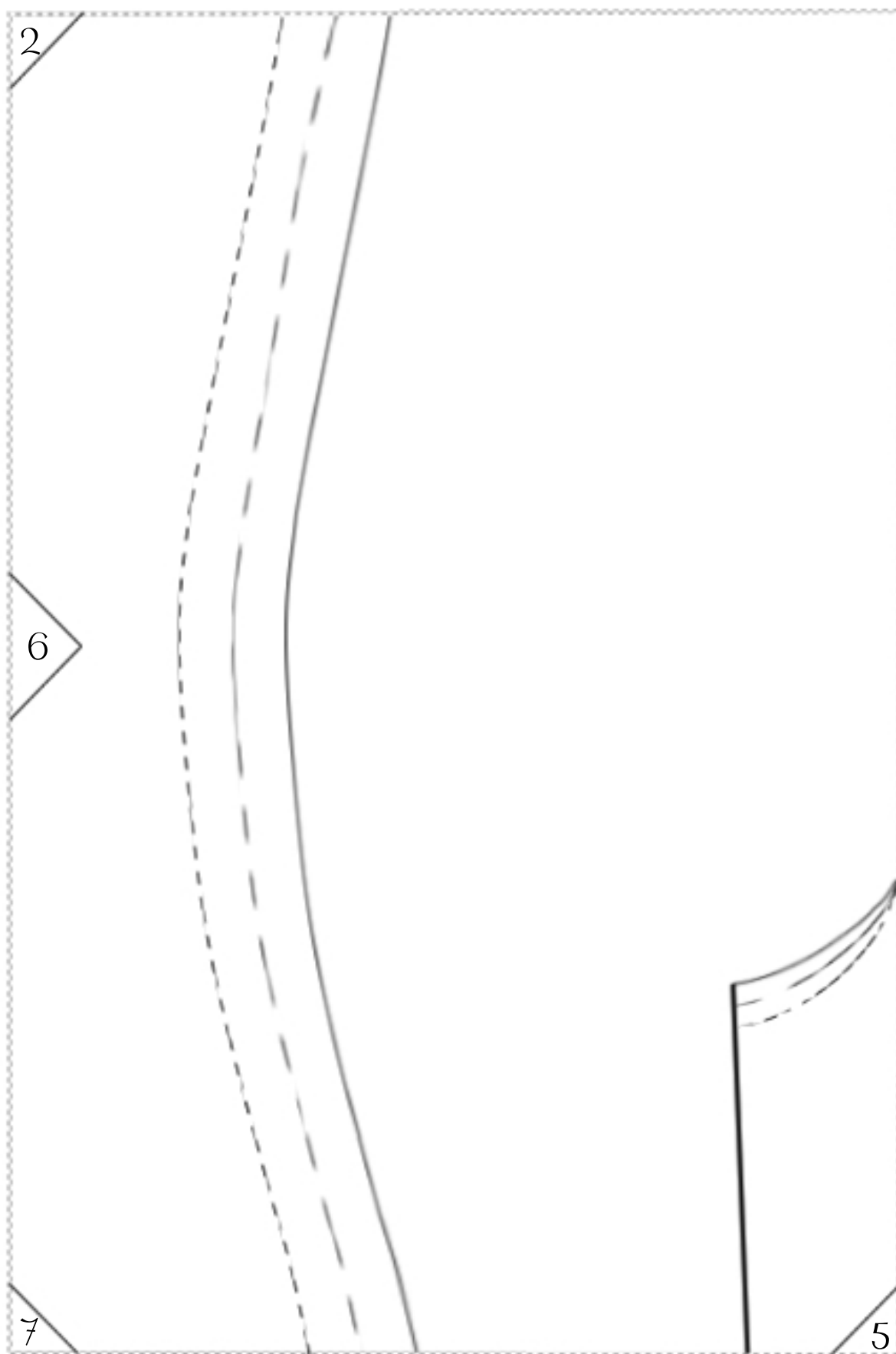
Front Bodice

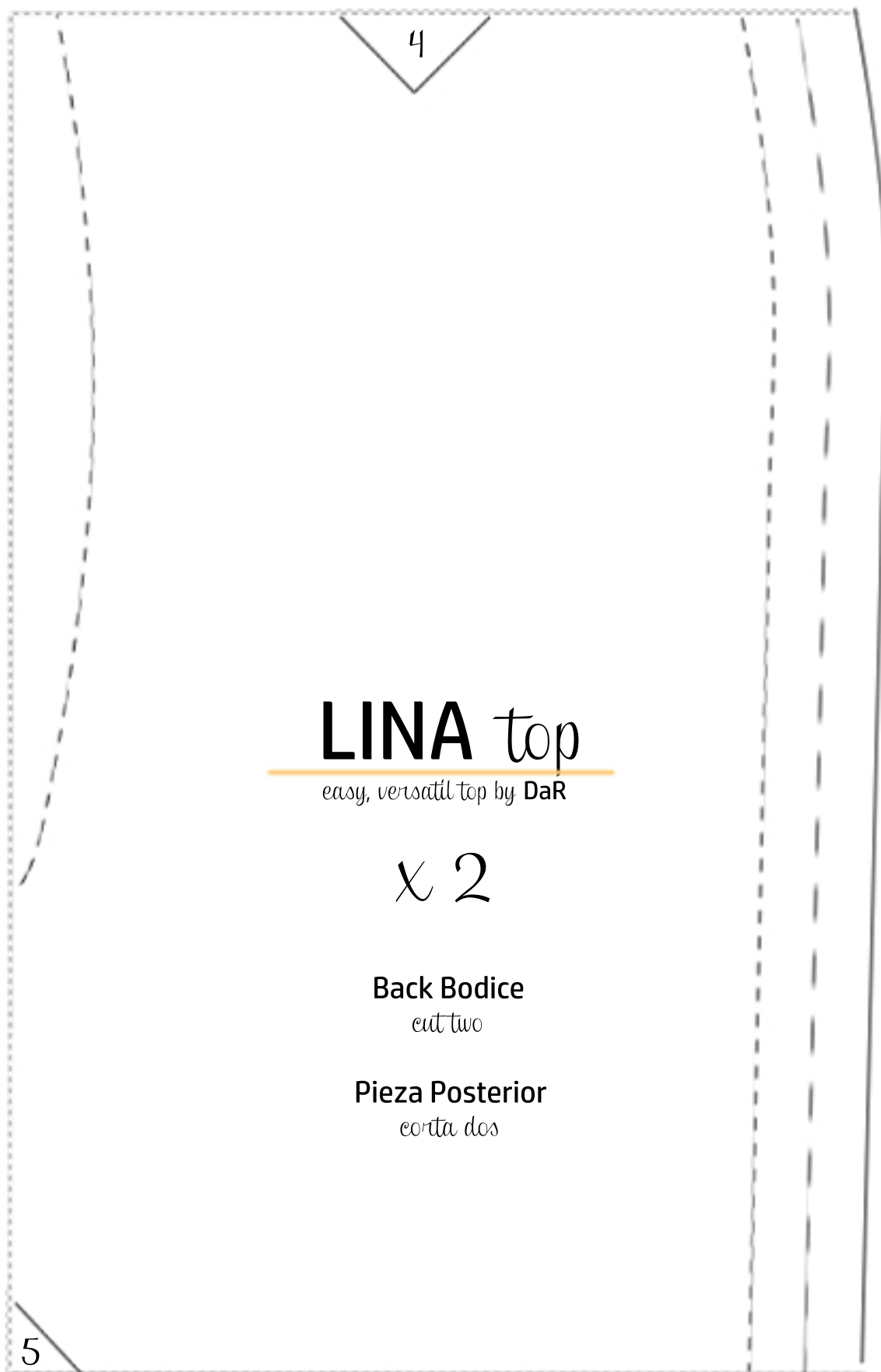
cut one on fold

Pieza Delantera

corta una al dobléz







4

LINA top

easy, versatil top by DaR

x 2

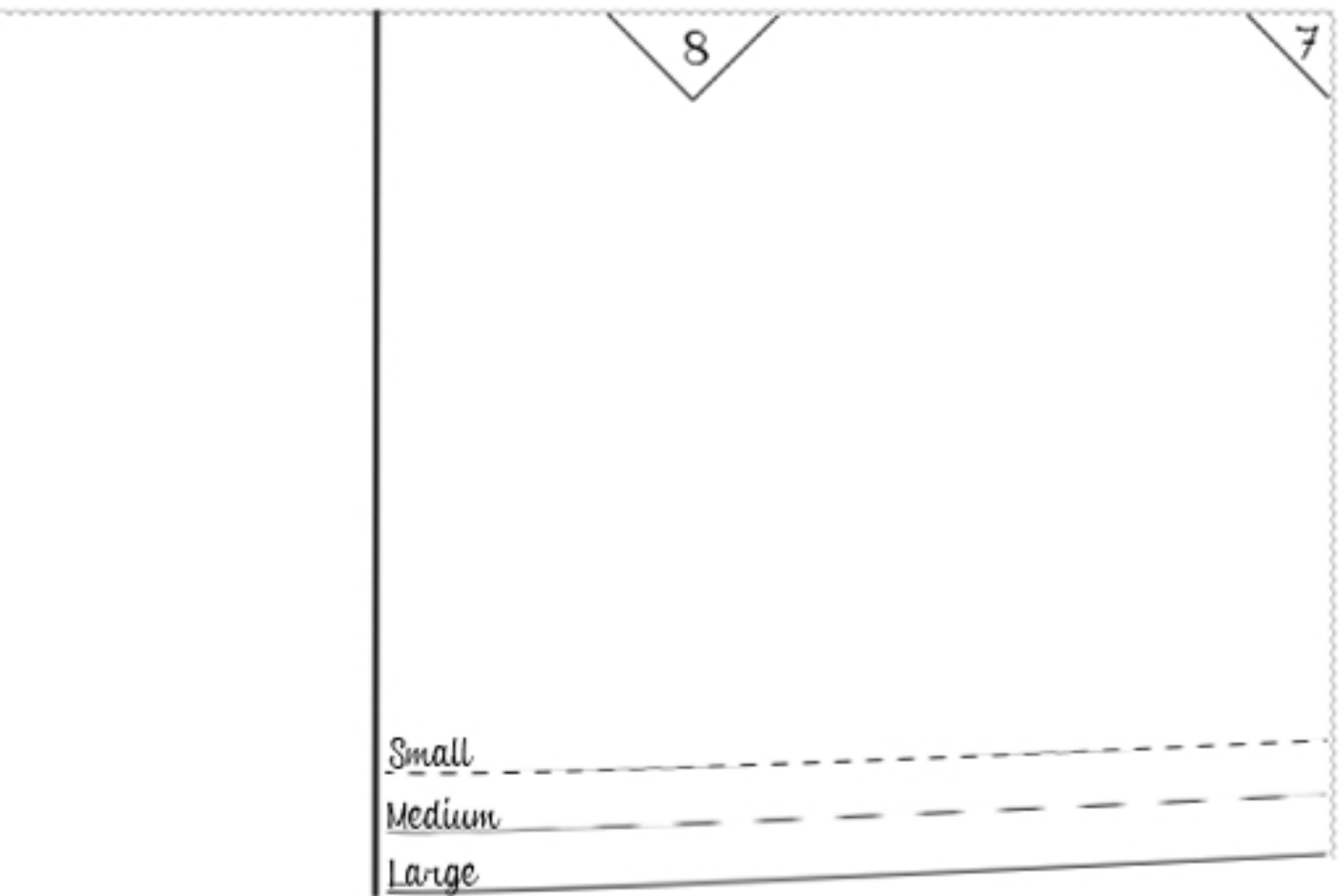
Back Bodice

cut two

Pieza Posterior

corta dos

5



Test Square
3x3

